



# KMNET ADMIN 2.0

## Sales Company Feature Overview

### OVERVIEW

KMnet Admin is the second major release for Kyocera Mita's Java-based device management program. It is primarily a performance release and offers greatly improved speed and lower memory usage, as well as some new and enhanced features.

### SYSTEM IMPROVEMENTS (FROM 1.01C TO 2.0)

- Memory usage - 30% decrease
- Open Device Property Page - 75% decrease
- First Starting Time for server- 76% decrease (1.01c 420sec, 2.0 100sec)
- Later Times Starting Time for server - 72% decrease (1.01c 240sec, 2.0 66sec)
- Hard Disk Space – 47% decrease
- Package Size (Full) - 24% decrease
- Package Size (Light<sup>1</sup>) - 49% decrease

### NEW DEVICE MANAGEMENT AND GENERAL FEATURES

#### SUPPORT FOR ADDITIONAL NETWORK PROTOCOLS

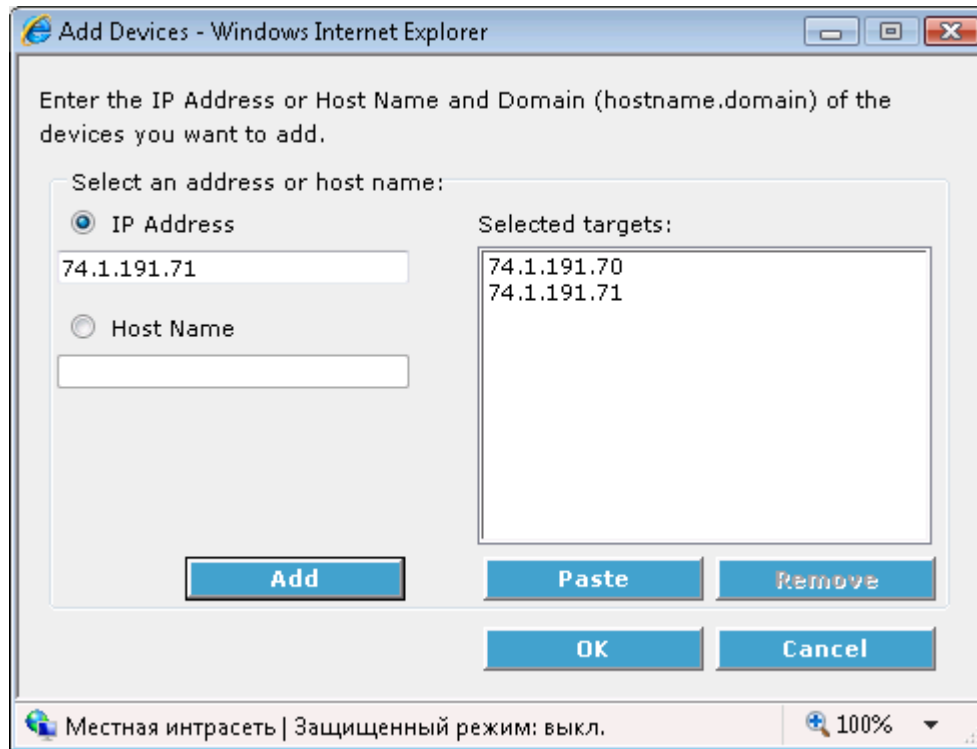
KMnet Admin 2.0 newly supports IPv6 and SNMPv3 for applicable Kyocera devices.

#### ADDING MULTIPLE DEVICES BY IP ADDRESSES OR HOSTNAMES

KMnet Admin 2.0 lets administrators add multiple devices by IP address or host name in one step by entering or pasting them into the discovery target list. This is especially helpful if administrators do not want to perform network discovery, but instead add known IP addresses or host names stored in another format.

---

<sup>1</sup> Light package will be used for incremental upgrades after the 2.0 release. It does not include Java and other common libraries.



## NEW REPORTS AND COUNTERS

KMnet Admin 2.0 adds a number of additional reports that have been requested since the 1.0 release. These new reports include:

- Device Volume by Manufacturer
- Device Usage by Accounts
- Device Counters Raw Data Export
- Account Report
- Account Activity on Devices

KMnet Admin Accounting Manager now also supports the following counters and restrictions for applicable devices:

- Hagaki
- Fax-in counters
- Fax-in function restriction
- Copier and scan function restriction
- Fax send time restriction

## EXPORT OF RAW ACCOUNTING DATA

Users can now export accounting counter data as CSV and XML files in addition to creating HTML and PDF reports.

	A	B	C	D	E	F	G
1	Period Begin	Period End	Consolidation Type				
2	10/06/2007	14/06/2007	daily				
3	Device ID	Counter Total	Delta Counter Total	Date Counter Total	Print Total	Delta Print Total	Date Print Total
4	FS-1920 (10.10.11.156)	6155	30	14/06/2007 13:20:43	6155	30	14/06/2007 13:20:43
5	FS-1920 (10.10.11.156)	6125	10	13/06/2007 13:19:41	6125	10	13/06/2007 13:19:41
6	FS-1920 (10.10.11.156)	6125	0	12/06/2007 13:21:41	6125	0	12/06/2007 13:21:41
7	FS-1920 (10.10.11.156)	6120	5	11/06/2007 13:19:41	6120	5	11/06/2007 13:19:41
8	FS-1920 (10.10.11.156)	6120	0	10/06/2007 13:21:41	6120	0	10/06/2007 13:21:41
9	KM-1820 (10.10.11.152)	4273	3	14/06/2007 13:20:43	4273	3	14/06/2007 13:20:43
10	KM-1820 (10.10.11.152)	4270	0	13/06/2007 13:19:41	4270	0	13/06/2007 13:19:41

## ACCOUNT GROUPING

For more efficient accounting management, users can now create groups of printing devices or accounts that have similar properties. Once groups are created, users can manage printing devices and accounts by group. Reports can be generated based on a specified group.

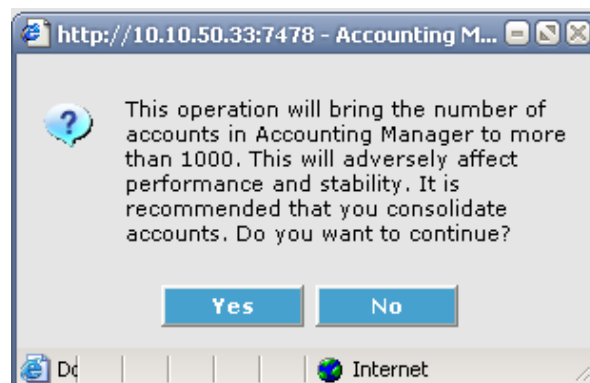
**Note:** Creating a group for one printing device lets users create a report based on that device.

## ACCOUNT MULTI-SET AND CLONING

Account Multi-set and Clone lets administrators set up accounts and account settings on multiple devices or copy accounts from a source to a destination device.

**Note:** Kyocera printers and MFPs have accounts stored separately for every device even if they have the same account ID. Cloning many accounts to many devices, or using Multi-set for large numbers of accounts or devices will increase the KMnet Admin database size and adversely affect performance. For example, cloning 50 accounts to 20 devices will create 1000 account records in the KMnet Admin database.

For any operation that will result in more than 1000 accounting record, a warning will be displayed.





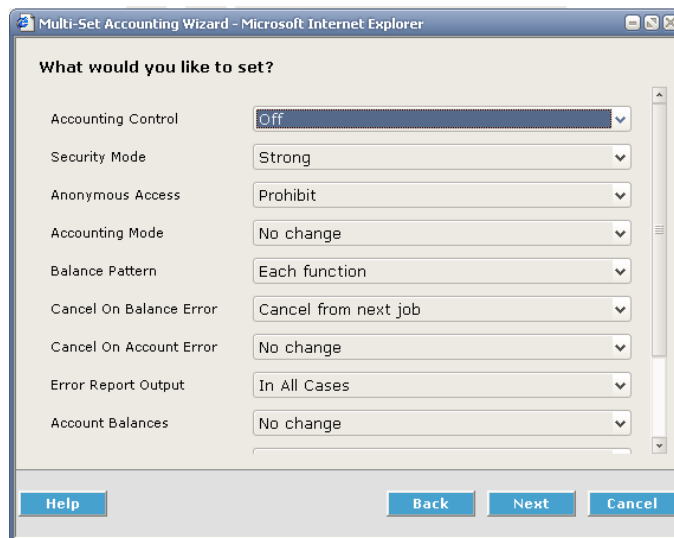
The multi-set accounting wizard allows administrators to edit the following settings on all selected devices.

Overall device settings:

- Accounting Control
- Security Mode
- Anonymous Access
- Accounting Mode
- Balance Pattern
- Cancel on Balance Error
- Cancel on Account Error
- Error Report Output
- Reset Counters Schedule

Per account settings (these settings will be applied to all accounts on the selected device):

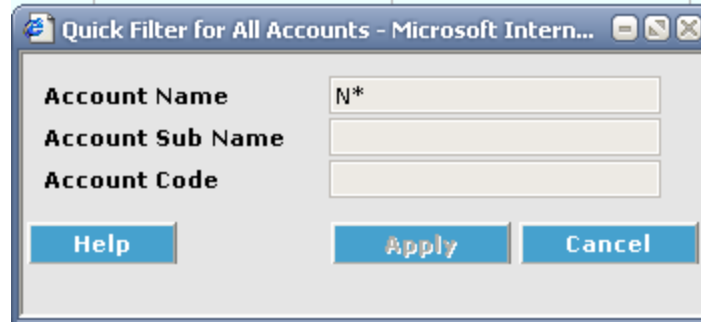
- Account Balances (applied for all accounting counters)
- Balance Restrictions
- Function Restrictions



When running multi-set for accounting, additional accounts can be added from the KMnet Admin database. These accounts will be copied to the device with the settings specified in multi-set.

## MINOR CHANGES

The new quick search feature for Accounting Manager lets users find accounts and account groups by Account Name, Sub Name, and Account Code.



## SUPPORTED CONFIGURATIONS

KMnet Admin 2.0 is recommended for use with Windows XP and above.

### SUPPORTED SERVER OPERATING SYSTEMS:

- Microsoft Windows® 2000 with Service Pack 3 or newer
- Microsoft Windows® 2000 Server with Service Pack 3 or newer
- Microsoft Windows® Server 2003/2008
- Microsoft Windows® XP Professional 32 bit
- Microsoft Windows® XP Professional 64 bit with Service Pack 2 or newer
- Windows Vista™ 32 bit
- Windows Vista™ 64 bit with Service Pack 1 or newer

### SUPPORTED SERVER SYSTEM CONFIGURATION:

- Memory requirements vary depending on the number of managed devices and the number of installed KMnet Admin plug-ins.
- Minimum configuration for running KMnet Admin: 512MB memory, 500MB hard disk space
- Recommended configuration for small to medium networks, or when using plug-in consoles like Print Job Manager and/or Accounting: 2.0 GHz CPU, 1GB memory, 500MB hard disk space
- Recommended configuration for enterprise networks: 2.0 GHz CPU, 2GB memory, 2GB hard disk space



#### SUPPORTED CLIENT OPERATING SYSTEMS:

- Microsoft Windows® 2000
- Microsoft Windows® Server 2003/2008
- Microsoft Windows® XP Professional 32 bit
- Microsoft Windows® XP Professional 64 bit with Service Pack 2 or newer
- Windows Vista™ 32 bit
- Windows Vista™ 64 bit with Service Pack 1 or newer

**Note: Windows 7 RC1 currently is not supported at this time.**

#### SUPPORTED BROWSERS

Microsoft Internet Explorer 6 (with SP1) or 7. Cookies must be enabled.

#### SUPPORTED PRINTERS

Kyocera network printers and most third party network printers that support the standard printer MIB.

#### DEVICE MANAGER MAXIMUM VALIDATED CONFIGURATION:

Up to 1500 managed devices, 45 managed networks, 100 device groups, and 10 simultaneous client connections

#### ACCOUNTING MANAGER MAXIMUM VALIDATED CONFIGURATION:

Up to 1000 managed device accounts

#### PRINT JOB MANAGER MAXIMUM VALIDATED CONFIGURATION:

Up to 2000 print jobs per day

#### MY PRINT JOBS MAXIMUM VALIDATED CONFIGURATION:

Up to 100 simultaneous user connections