



---

# Mac Driver 4.1

## Software Information

Version 1.0  
August 10, 2018  
KYOCERA Document Solutions Inc.

THE NEW VALUE FRONTIER

**Contents**

I. OVERVIEW .....	3
II. NEW FEATURES IN v4.1 .....	3
Support for Net Manager .....	3
Using an Application Name as the Job Name .....	5
III. SUPPORT INFORMATION.....	6
Languages .....	6
Device Models.....	7
Operating Systems .....	9

**Revision History**

<b>Date</b>	<b>Version</b>	<b>Page</b>	<b>Item</b>
Aug. 10, 2018	1.0		First release

## I. Overview

Mac Driver 4.1 is the newest version of the Mac driver for KYOCERA printers and MFPs. It improves your printing experience by providing new features and supporting new models. This document describes the new features in Mac Driver v4.1.

## II. New Features in v4.1

### Support for Net Manager

Net Manager is a server based application that provides centralized user authentication, user authorization, user access control, and secure pull printing features. When policies restrict printing features, Net Manager reconfigures the printer driver so that the restricted printing features are unavailable to the user or group. The Net Manager options let you choose how conflicts are handled between a policy and a driver selection.

The following Net Manager features are supported in Mac Driver 4.1:

#### Queues

- Print&Follow
- Direct

#### Accounting

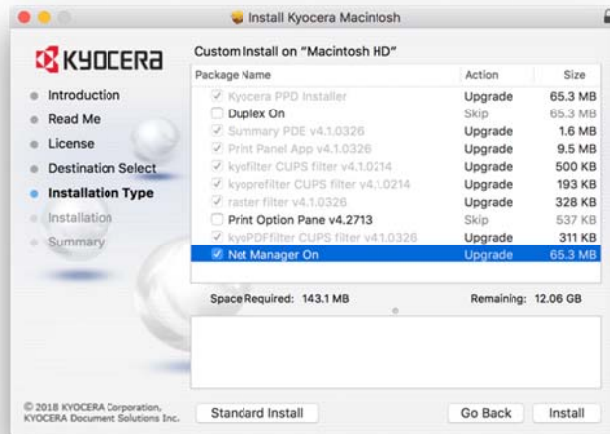
- Credit / Quota

#### Policies

- Duplex
- Color Print
- EcoPrint
- Restrict Print

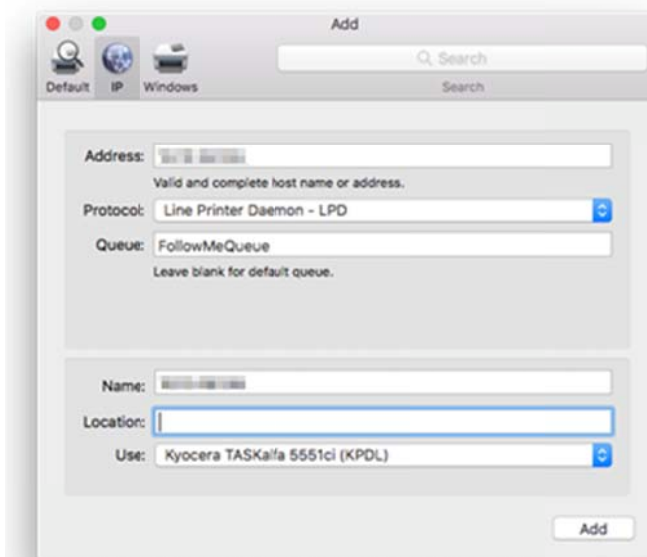
#### Installation

Net Manager can be enabled during driver installation.



### Adding a printer

Net Manager for Mac driver is supported by adding IP address of the Net Manager server and queue name in Print & Scanners dialog. Above information cannot be changed after driver creation.



Address:

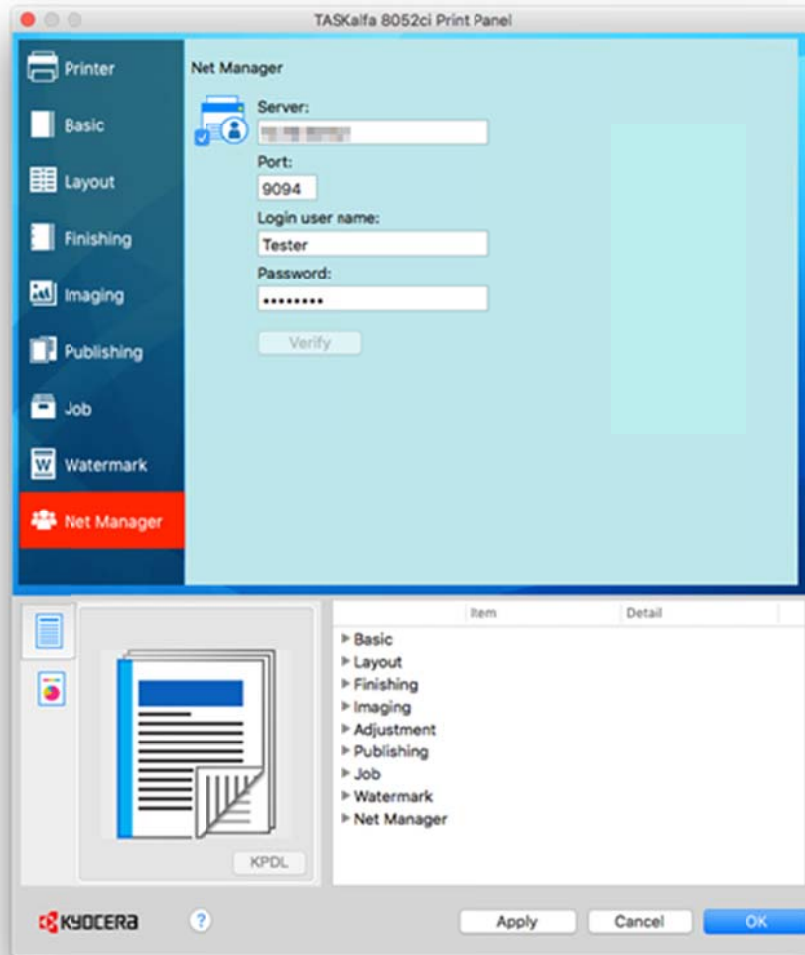
- Add IP address of Net Manager server.

Queue name:

- Add queue name specified in Net Manager server.

### Authentication

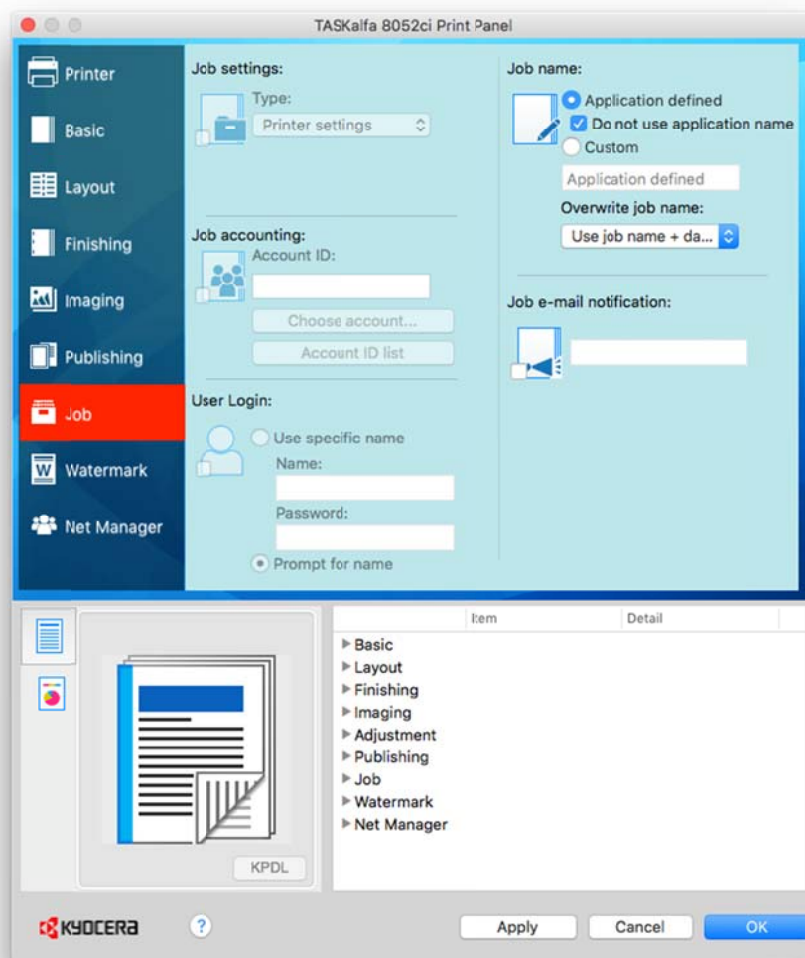
Authenticate the Net Manager server by providing the server address, port number, user name, and password.



### Using an Application Name as the Job Name

A Job name is a unique identifier for each print job. It helps you find and print your job from the printing system's operation panel.

The application name (Microsoft Word, Text Edit, etc.) is displayed as a job name if "Do not use application name" is unselected.



### III. Support Information

#### Languages

- English
- French
- German
- Italian
- Japanese
- Korean
- Portuguese
- Spanish

**Device Models**

The following devices are supported in Mac Driver 4.1:

## KYOCERA Models

FS C8600DN	TASKalfa 6550ci	FS 6030MFP	CS 2551ci
FS C8650DN	TASKalfa 7550ci	TASKalfa 255	TASKalfa 3510i
FS 6525MFP	TASKalfa 8000i	TASKalfa 305	TASKalfa 3010i
FS 6530MFP	FS C5100DN	CS 250ci	CS 3510i
FS C8520MFP	FS C5200DN	CS 300ci	CS 3010i
FS C8525MFP	FS C5300DN	CS 400ci	
FS 4300DN	FS C5350DN	CS 500ci	ECOSYS M2030dn
FS 4200DN	FS 3040MFP	TASKalfa 250ci	ECOSYS M2530dn
FS 4100DN	FS 3140MFP	TASKalfa 300ci	ECOSYS M2035dn
FS 2100DN	FS 1028MFP	TASKalfa 400ci	ECOSYS M2535dn
FS 2100D	FS 1128MFP	TASKalfa 500ci	ECOSYS M6026cdn
TASKalfa 2550ci	KM 2810	CS 552ci	ECOSYS M6526cdn
CS 2550ci	KM 2820	TASKalfa 552ci	ECOSYS M6026cidn
FS 1030MFP	FS 1350DN	FS C8500DN	ECOSYS M6526cidn
FS 1130MFP	FS 1370DN	CS 300i	
FS 1035MFP	CS 420i	TASKalfa 300i	ECOSYS P6021cdn
FS 1135MFP	CS 520i	FS C5400DN	ECOSYS P6026cdn
FS 2020D	TASKalfa 420i	TASKalfa 3051ci	ECOSYS P6030cdn
FS 3920DN	TASKalfa 520i	TASKalfa 3551ci	ECOSYS P2135dn
FS 4020DN	FS C2026MFP	TASKalfa 4551ci	ECOSYS P2035d
	FS C2126MFP	TASKalfa 5551ci	ECOSYS P2135d
CS 3050ci	FS C5150DN	TASKalfa 3501i	ECOSYS P7035cdn
CS 3500i	FS C5250DN	TASKalfa 4501i	ECOSYS M3040dn
CS 3550ci	CS 205c	TASKalfa 5501i	ECOSYS M3540dn
CS 4500i	CS 255c	TASKalfa 6501i	ECOSYS M3040idn
CS 4550ci	FS C8020MFP	TASKalfa 8001i	ECOSYS M3540idn
CS 5500i	FS C8025MFP	TASKalfa 6551ci	ECOSYS M3550idn
CS 5550ci	TASKalfa 205c	TASKalfa 7551ci	ECOSYS M3560idn
CS 6500i	TASKalfa 255c	CS 3051ci	FS 9530dn
CS 6550ci	FS 3040MFP+	CS 3551ci	FS 9130dn
CS 7550ci	FS 3140MFP+	CS 4551ci	FS 1120D
CS 8000i	FS 3540MFP	CS 5551ci	FS 1320D
TASKalfa 3050ci	FS 3640MFP	CS 3501i	

TASKalfa 3500i	FS C2026MFP+	CS 4501i	
TASKalfa 3550ci	FS C2126MFP+	CS 5501i	ECOSYS M6030cdn
TASKalfa 4500i	FS C2526MFP	CS 6501i	ECOSYS M6035cidn
TASKalfa 4550ci	FS C2626MFP	CS 8001i	ECOSYS M6530cdn
TASKalfa 5500i	CS 255	CS 6551ci	ECOSYS M6535cidn
TASKalfa 5550ci	CS 305	CS 7551ci	ECOSYS P6035cdn
TASKalfa 6500i	FS 6025MFP	TASKalfa 2551ci	TASKalfa 2552ci
ECOSYS P6130cdn	TASKalfa 5052ci	ECOSYS M2540dw	TASKalfa 3252ci
TASKalfa 306ci	TASKalfa 6002i	ECOSYS M2635dn	TASKalfa 3552ci
TASKalfa 356ci	TASKalfa 6052ci	ECOSYS M2635dw	TASKalfa 4002i
TASKalfa 406ci	CS 7002i	ECOSYS M2640idw	TASKalfa 4052ci
CS 306ci	CS 7052ci	ECOSYS M2735dw	TASKalfa 5002i
CS 356ci	CS 8002i	ECOSYS P2040dn	ECOSYS P3050dn
CS 406ci	CS 8052ci	ECOSYS P2040dw	ECOSYS P3055dn
CS 2552ci	TASKalfa 7002i	ECOSYS P2235dn	ECOSYS P3060dn
CS 3252ci	TASKalfa 7052ci	ECOSYS P2235dw	ECOSYS M2040dn
CS 3552ci	TASKalfa 8002i	ECOSYS M5521cdn	ECOSYS M2135dn
CS 4002i	TASKalfa 8052ci	ECOSYS M5521cdw	ECOSYS M2540dn
CS 4052ci	CS 3011i	ECOSYS M5526cdn	ECOSYS P5026cdw
CS 5002i	CS 3511i	ECOSYS M5526cdw	
CS 5052ci	TASKalfa 3011i	ECOSYS P5021cdn	ECOSYS M8024cidn
CS 6002i	TASKalfa 3511i	ECOSYS P5021cdw	
CS 6052ci	ECOSYS P3045dn	ECOSYS P5026cdn	
ECOSYS M5525cdn	ECOSYS M5520cdw	ECOSYS M5520cdn	ECOSYS P5025cdn
ECOSYS P5020cdw	ECOSYS P5020cdn		ECOSYS M8024cidn
ECOSYS M4132idn	ECOSYS M4125idn	ECOSYS P8060cdn	
ECOSYS M8124cidn	ECOSYS M8130cidn	ECOSYS P6230cdn	ECOSYS P6235cdn
ECOSYS P7240cdn	ECOSYS M6230cidn	ECOSYS M6630cidn	ECOSYS M6235cidn
ECOSYS M6635cidn	TASKalfa 351ci	ECOSYS M3660idn	ECOSYS M3655idn
ECOSYS M3645idn	ECOSYS M3145idn	ECOSYS M3645dn	ECOSYS M3145dn
ECOSYS P2335d	ECOSYS P2335dn	ECOSYS P2335dw	ECOSYS M2235dn
ECOSYS M2735dn	ECOSYS M2835dw	CS 307ci	TASKalfa 307ci
CS 4012i	CS 3212i	TASKalfa 4012i	TASKalfa 3212i
CS 9002i	TASKalfa 9002i	ECOSYS M5021cdn	



**Operating Systems**

The following Mac OS are supported:

- 10.9 Mavericks
- 10.10 Yosemite
- 10.11 El Capitan
- 10.12 Sierra
- 10.13 High Sierra

The following Mac OS is no longer supported:

- 10.8 Mountain Lion